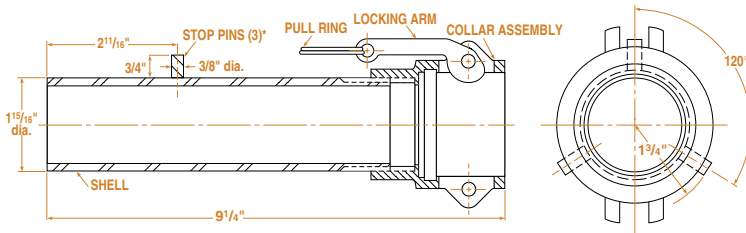


DRUM AND PAIL FILTER



DRUM AND PAIL FILTER



Dimensions are nominal; not to be used for installation purposes.
 * Units available without stop pins as shown. Please specify when ordering.

FSI offers the answer to filling line final filtration with Model FMC-22, a lightweight, easily maneuvered, quick disconnect filter. It's a filter bag, positive gasket seal, restrainer basket, coupling and directional nozzle in one self-contained vessel. The unit even features built-in stops to limit insertion depth into closed head drums. Excellent filter to fill 5 gallon pails.

FSI offers this final stage drum filter in stainless or carbon steel for applications ranging from chemicals, paints, inks, solvents and resins to oil, petrochemicals and more viscous products as well.

Specifications:

- Standard 1 1/2" female quick disconnect couplings
- 1-10 GPM flow rates
- 9 1/4" overall length
- Shell, collar, coupling, stop pins and all parts included (units also available without stop pins)
- Standard 304 S.S. restrainer basket
- Positive gasket seal
- *Immediate availability from stock on all parts*

How to Order

EXAMPLE: **FMC - 22 - 1 1/2 - 304 - B**

VESSEL TYPE: _____
 FMC = Filter, mechanical

LINE SIZE: _____
 1 1/2" diameter

MATERIAL: _____
 CS = Carbon Steel
 304 = 304 Stainless Steel
 316 = 316 Stainless Steel

GASKET: _____
 B = BUNA N
 N = Neoprene
 V = Viton

Filter Bags

The FMC-22 uses filter bags made from NMO (nylon monofilament). The bags have a molded plastic seal to prevent liquid bypass.

How to Order

EXAMPLE: **B NMO 150 P 2 P A**

TYPE OF FILTER: _____
 B = Bag

MATERIAL: _____
 NMO = Mesh,
 Nylon monofilament

MICRON RATING: _____
 1, 5, 10, 25,
 35, 45, 55, 65,
 75, 100, 125, 150,
 175, 200, 250, 300,
 400, 600, 800, 1200

COVER: _____
 P = Plain (no cover)

SIZE: _____
 1: 7" x 16"
 2: 7" x 32"
 3: 4" x 8.25"
 4: 4" x 14"
 5*: 6 7/8" x 34"
 6*: 6 7/8" x 16 1/2"
 7: 5 1/2" x 16"
 8: 5 1/2" x 22"
 9: 5 1/2" x 33"
 5GP: 5 Gallon Pail
 12X18D: 12" x 18" Drawstring
 18X24D: 18" x 24" Drawstring
 18X28D: 18" x 28" Drawstring

RING: _____
 P = Polyloc
 C = Cuno
 PE = Polyester Polyloc
 N = Nylon Polyloc
 S = Snap fit metal ring
 SSS = Stainless steel snap fit
 CO = Commercial steel ring
 COP = Commercial plastic ring
 RP = Ronningen-Petter snap fit
 RPP = Ronningen-Petter plastic
 RPF = Ronningen-Petter 8" Flange Ring

SUFFIX: _____
 WE = Welded seam construction (size 3 & 4 only)
 A = Auto construction LOOPS = Loops
 C = Cotton handles R = Reverse collar
 N = Nylon handles W = DI washed

NOTE: * = Sizes 5 and 6 available with S ring only.

NOTE: For information on mating hose and compatible couplings, contact FSI or your distributor.

TO LEARN MORE ABOUT FILTER SPECIALISTS, INC. PRODUCTS, CONTACT ONE OF THE OFFICES OR VISIT OUR WEBSITE AT: <http://www.fsifilters.com>



USA
FILTER SPECIALISTS, INC.
 SHIP: 100 Anchor Road
 Michigan City, IN 46360
 MAIL: P. O. Box 735
 Michigan City, IN 46361
 Phone: 219-879-3307
800-348-3205
 Fax: 219-877-0632

Europe
**FILTER SPECIALISTS INTERNA-
 TIONAL GMBH**
 Valterweg 3.1
 D-65817 Eppstein-Bremthal
 Germany
 Phone: 011-49-6198-58080
 Fax: 011-49-6198-580815

Central America
FSI de MEXICO
 S. de R.L. de C.V.
 Centeno 119-A
 Granjas Esmerelda
 Iztapalapa, Mexico D.F.
 C.P. 09810
 Phone: 011-52-5-670-2224
 Fax: 011-52-5-670-6068

South America
FSI SUL AMERICANA INDUSTRIAS
 Rua Oneda
 671 Bairro Planalto
 Sao Bernardo Do Campo
 Sao Paulo, Brazil
 Cep 09895-280
 Phone: 011-55-11-4341-6840
 Fax: 011-55-11-4341-6464



FMC-025-602 PRINTED IN USA
 Part No. RMLFMC

There are no expressed or implied warranties, including the implied warranty of merchantability and fitness for a particular purpose not specific herein respecting this agreement or the product being sold hereunder or the service provided herein.